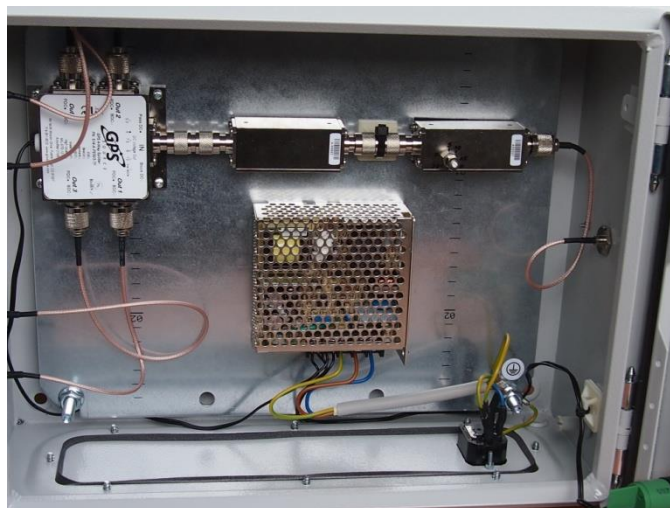


Cabinet for GPS signal distribution

Signal distribution 1 in 4, Amplifier, Filter, Part number: 40000001

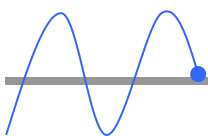


Features:

- GPS signal distribution 1 in 4 with amplifier and filter
- Ruggedized and weather proofed housing IP66
- Variable Gain 21 to 51 dB
- High Rejection Filter for L1 (1.575 MHz)
- +5V DC at all RF ports

Description:

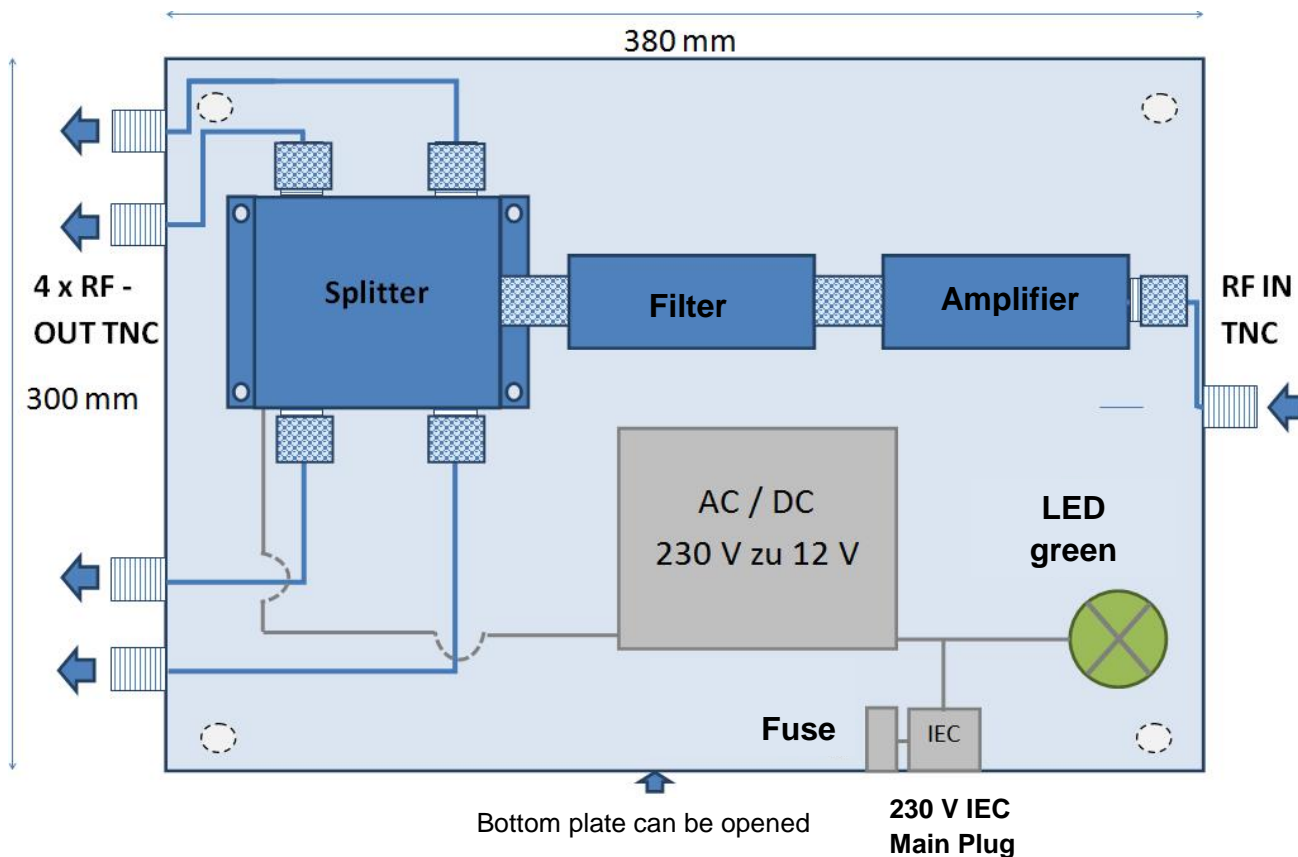
This ruggedized cabinet is a one-input, four-output device. It splits the GPS input signal to four output ports. Signals outside of the L1 frequency will be filtered out due to the High Rejection Filter (20 MHz bandwidth) to ensure a high-quality and interference-free signal. The gain can be altered manually via an external knob within 21 to 51 dB. Other GPS components (e.g. active antenna, repeater) can be supplied with DC voltage via coax cable (+5V DC at all ports). A green LED indicates operational status.



Cabinet for GPS signal distribution

Signal distribution 1 in 4, Amplifier, Filter, Part number: 40000001

Overview:



System: Cabinet GPS signal distribution with Filter, Amplifier, Splitter 1 in 4, Housing Protective class I

RF ports: Left side: 4x RF Out -TNC-F +5V DC PASS
Right side: 1x RF IN - TNC-F +5V DC PASS
Bottom side: 1x IEC Con +230V AC, 3A Fuse

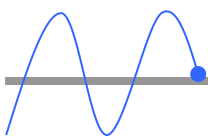
Amplifier: Variable, 0 – 30 dB, DC Pass

Filter: Passive High Rejection Frequency Filter for L1, Pass DC
Center frequency: 1575.4 MHz
Bandwidth: 20 MHz

Splitter: Active Splitter 1 in 4, 21 dB gain, +5V DC Pass on all ports

Power: 230V / 12V adjustable AC/DC – Converter, 25W max., 2.1A max.

LED: Status – LED, green +12V DC



Cabinet for GPS signal distribution

Signal distribution 1 in 4, Amplifier, Filter, Part number: 40000001

Electrical Specifications:

Frequency Range:	GPS L1 @ 1.575 MHz
Bandwidth (High Rejection Filter):	20 MHz
SWR:	2.0:1
Noise:	3,6 dB
Group Delay:	6 ns
Gain:	21-51 dB
High Rejection:	-35 db / -25 dB (@ -50 / +50 MHz) // -37 dB (@ -100 / +100 MHz)
Impedance:	50 Ohm
HF Input max.	+30 dBm
Current Consumption (Cabinet):	70 mA
Thru Current:	250 mA
Protection Class:	I

Physical Specification:

Dimensions:	380 x 300 x 155 mm (with connectors: 420 x 300 x 155 mm) // H x L x D
Weight:	~ 9 kg
Material housing:	Sheet stell, dipcoat-primed, powder-coated (RAL 7035)
Environmental Conditions:	IP 66 compliant to EN 60529, NEMA 4 qualified
RF Connectors (Input, Output 1-4)	TNC-f with cap
Temperature Range:	-20 to +65 ° Celsius