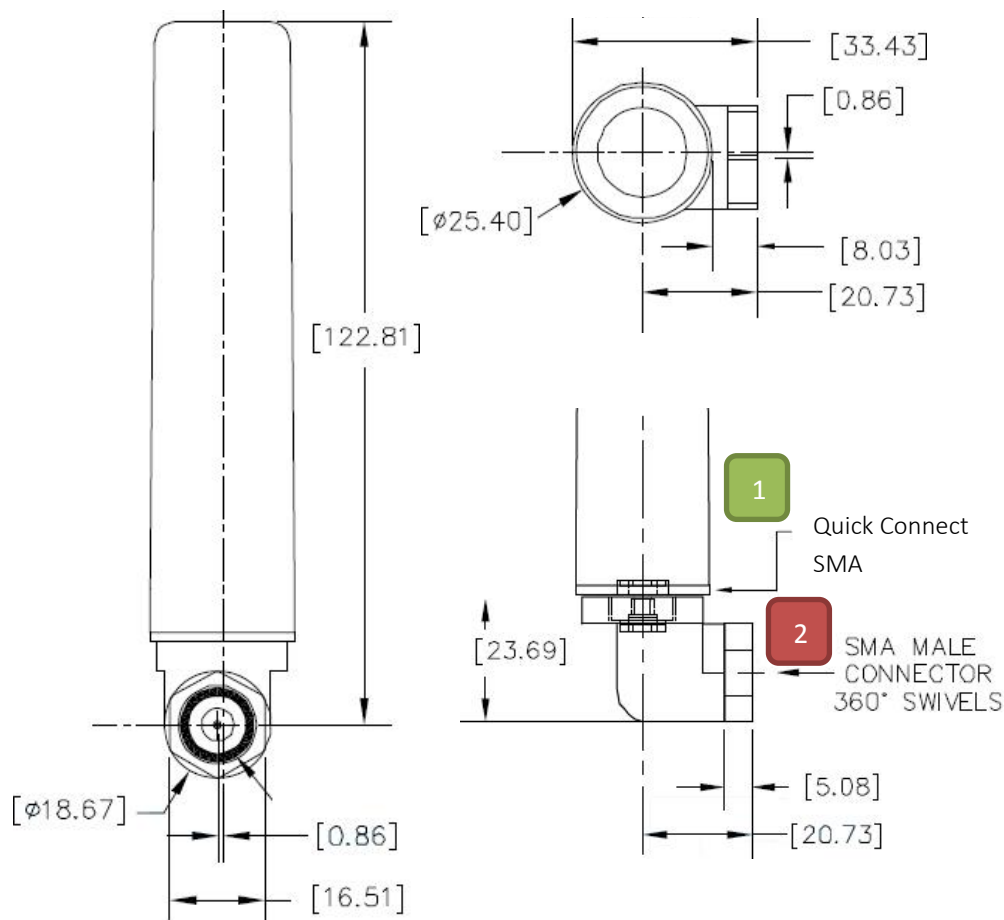


# GPS / Glonass / Iridium / Inmarsat antenna

Type: 3D1216A

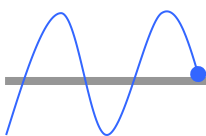


## Features:

- Convenient antenna for mobile application
- Integrated powerful low-noise-amplifier (LNA)
- Designed for harsh environmental conditions
- Vertical or horizontal mounting
- Very low-noise figure
- Many options available

## Description:

This solid and compact antenna is designed for mobile applications like handheld devices. The 3D1216A is a mobile allrounder and covers GPS, Glonass, Iridium and Inmarsat frequencies. It is easy to install and could be turned around (360°). The ruggedized and weatherproof housing protects the antenna at outdoor operations. With 21dB total gain a good signal reception is ensured. The antenna is available with many different options (see options).



# GPS / Glonass / Iridium / Inmarsat antenna

Type: 3D1216A

Technical data:

	L1 GPS	Rx INMARSAT	Tx INMARSAT	Glonass	Iridium	L2 GPS
Frequencies:	1575 ± 15 MHz	1542 ± 17 MHz	1642 ± 17 MHz	1609 ± 7 MHz	1618 ± 8 MHz	1227± 15MHz
Beamwidth:	152° / 173°	150° / 173°	170° / 180°	160° / 180°	180° / 182°	107° - 170°
Antenna gain (dBic) @Zenith	+1.2 / +0.9	+0.9 / +0.5	-0.1 / -0.5	+0.8 / +0.3	+0.3 / -0.1	-5.2
Axial ratio (dB):	1 - 3	1 - 3	1 - 3	1 - 3	1 - 3	1 - 5
Gain:	22 dB (± 2 dB)					
Radiation pattern:	Hemispherical (Helixtype)					
Polarization:	RHCP (Right Handed Circular Polarization)					
VSWR Output:	max. 1.5 : 1					
LNA Noise Figure	2 dB					
LNA P1dB Out:	13 dBm (input power level at which the gain ratio decreased by 1 dB)					
Power Supply	2.5 – 5 Volt DC (only active)					
Current consumption:	30 – 15 mA (only active)					
Impedance	50 Ohm					
Type:	Helix / Patch					
Material:	Base: Aluminium bound alloy with Polyurethaneenamel finish // Radome: Composite					
Weight:	70 g					
Altitude:	21.300 m max.					
Acceleration:	30 g max					
Environmental cond.	Hermetically sealed / skydrol resistant / flameretardant /abrasion-proof					
Operation temperature:	-55 ° C ~ + 85 ° C					
Dimensions:	ca. 130 (H) x 34 (B) x 26 (T) mm					
Lighning protection:	DC Grounding					

## Options:

part number structure:

3 D 1216 X - X X X - X

e.g. 3D1215A-XSS-3 =  
L1/L2, active, no cable SMA-m connector 1,  
SMA-m connector 2, black

